


VIBHUTI ENTERTAINMENTS

Battery&Electric Bumper Car Model

No	Name	INR	Specitication	Picture
1	Battery bumper car (ADULT CAR)	220000/-	Battery charger input voltage 电池充电输入 电压:220V/50Hz Output Voltage 输出电压:AC 24V Power 功率:140w Speed 速度:6-10km/h Weight 重量:215Kg Dimension 尺寸: L1.92×W1.16×H0.82(m) Time Setting 时间设定:2- 5min	
2	Battery bumper car (ADULT CAR)	190000/-	Battery charger input Voltage 电池充电输 入电压:220V/50Hz Output Voltage 输出电压:AC 24V Power 功率:140W Speed 速度:6-10km/h Weight 重量:215Kg Dimension 尺寸: L1.92×W1.15×H0.88(m) Time Setting 时间设定:2- 5min	 

3	Battery bumper car (ADULT CAR)	160000/-	<p>Battery charger input Voltage 电池充电输入电压:220V/50Hz</p> <p>Output Voltage 输出电压:AC 24V</p> <p>Power 功率:140w</p> <p>Speed 速度:6-10km/h</p> <p>Weight 重量:215Kg</p> <p>Dimension 尺寸: L1.92×W1.15×H0.88(m)</p> <p>Time Setting 时间设定:2-5min</p>	
---	--------------------------------	----------	--	---

4	Battery bumper car (CHILDREN CAR)	140000/-	<p>Battery charger input Voltage 电池充电输入电压:220V/50Hz</p> <p>Output Voltage 输出电压:AC 24V</p> <p>Power 功率:100w</p> <p>Speed 速度:4-6km/h</p> <p>Weight 重量:130Kg</p> <p>Dimension 尺寸: L1.39×W0.77×H0.66(m)</p> <p>Time Setting 时间设定:2-5min</p>	
---	-----------------------------------	----------	---	---

ELECTRIC MODEL

5	Electric Bumper Car Adult	250000/-	<p>Dimension 尺寸: L1.92×W1.16×H0.82(m)</p> <p>Weight 重量: 235 kg</p> <p>Power 功率:260W</p> <p>Input voltage 输入电压: AC48V</p> <p>Speed 速度:6~10Km/h</p>	<p>PPC14 MODEL BUMPER CAR COLOURS</p> 
---	---------------------------	----------	---	--

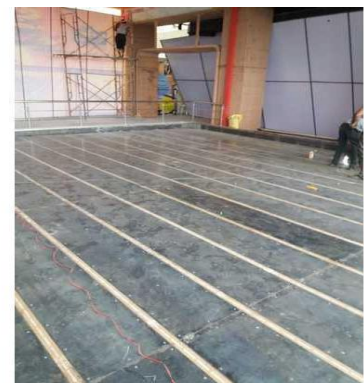
6	Electric Bumper Car Adult	230000/-	<p>Input Voltage输入电压:AC 380V/50Hz</p> <p>Output Voltage输出电压:AC 48V</p> <p>Power功率:10Kw</p> <p>Speed速度:6~10km/h Rated</p> <p>Load核定负载:140Kg</p> <p>Dimension尺寸: L1.92×W1.16×H0.82(m)</p> <p>Time Setting时间设定:1.5~5min±10s</p>	
7	Electric Bumper Car Adult	210000/-	<p>Input Voltage输入电压:AC 380V/50Hz</p> <p>Output Voltage输出电压:AC 48V</p> <p>Power功率:10Kw</p> <p>Speed速度:6~10km/h Rated</p> <p>Load核定负载:140Kg</p> <p>Dimension尺寸: L1.92×W1.16×H0.82(m)</p> <p>Time Setting时间设定:1.5~5min±10s</p>	
8	Electric Bumper Car Adult	180000/-	<p>Input Voltage输入电压:AC 380V/50Hz</p> <p>Output Voltage输出电压:AC 48V</p> <p>Power功率:10Kw</p> <p>Speed速度:6~10km/h Rated</p> <p>Load核定负载:140Kg</p> <p>Dimension尺寸:</p>	

9	Electric Bumper Car Adult	160000/-	<p>Input Voltage输入电压:AC 380V/50Hz</p> <p>Output Voltage输出电压:AC 48V</p> <p>Power功率:10Kw</p> <p>Speed速度:6~10km/h</p> <p>Rated Load核定负载:140Kg</p> <p>Dimension尺寸: L1.92×W1.15×H0.89(m)</p> <p>Amortize Airpressure:0.18~0.2 Mpa</p> <p>Time Setting时间设定:1.5~5min±10s</p>	
10	Electric Bumper Car Kids	150000/-	<p>Input Voltage输入电压:AC 380V/50Hz</p> <p>Power功率:120w</p> <p>Weight重量:105Kg</p> <p>Speed速度:6~10km/h</p> <p>AC:120W 48V 4A</p> <p>Dimension尺寸: L1.39×W0.77×H0.66(m)</p> <p>Time Setting时间设定:1.5~5min±10s</p>	

ELECTRIC BUMPER CAR PLATFORM



- 1) C'channel-5 MM
Size : C channel 2 inch x 4 inch
- 2) Plywood 32 mm -
Size : 8 ft x 4 ft
- 3) Ms plates 4 mm
Size 450 mm x 8 ft
- 4) Backelite sheet 4 mm
SIZE 50 mm x 4ft
- 5) S CSK ALLEN HEAD Bolts
SS csk screws



680Rs Sqft